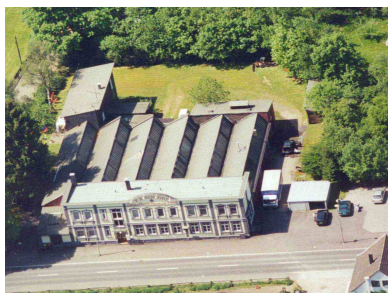
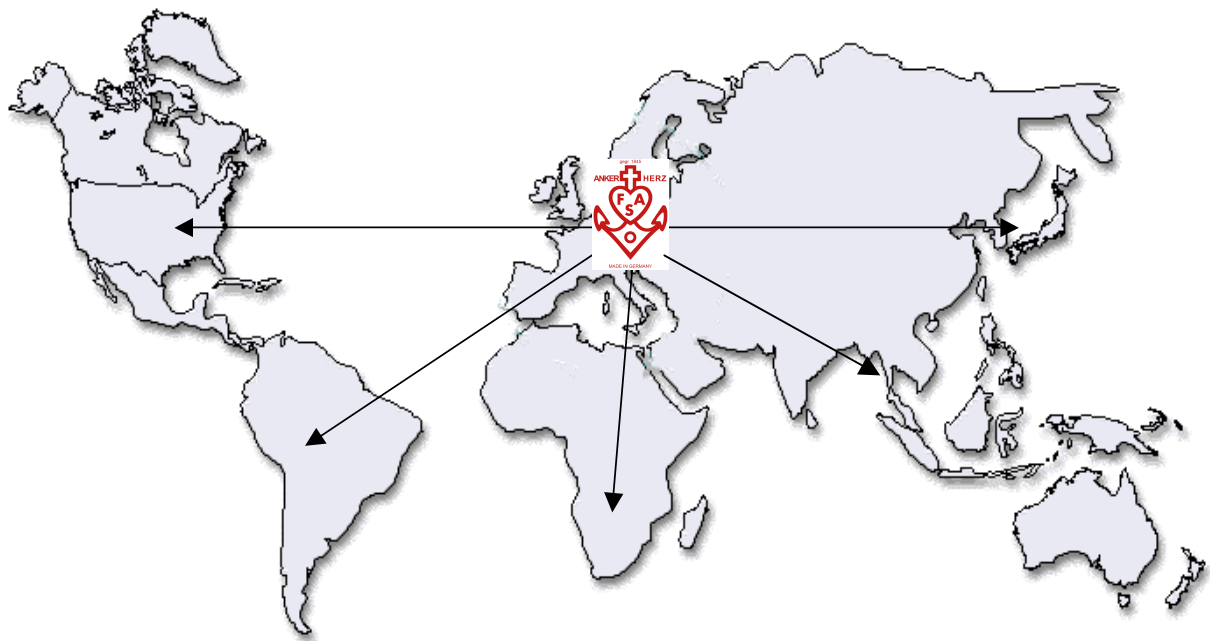


F.A.Schmidt GmbH & Co. KG

MACHINEKNIVES WORLDWIDE



Tapioca – Sawblades

www.faschmidt.de
D-42857 Remscheid, Morsbach 27

email: info@faschmidt.de
Tel.: +49 2191/71483
Fax: +49 2191/73717

F.A.Schmidt GmbH & Co. KG

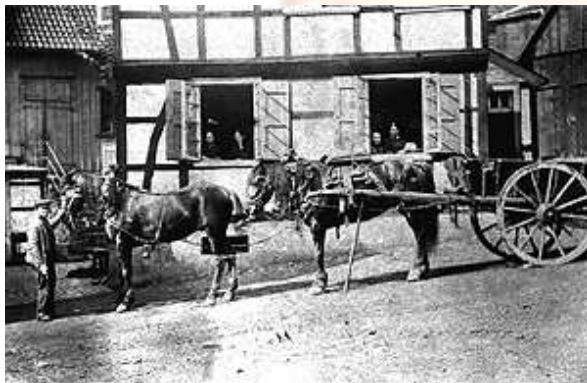
MACHINEKNIVES WORLDWIDE



In 1845, Franz-Arnold Schmidt founded the company F. A. Schmidt. The business company is still located in the beautiful surroundings of the County of Berg, today. In the 2nd generation son Carl continued the business.

Assembly tools, wire baskets and crinolines were manufactured. At that time deliveries took place by horse-drawn vehicles.

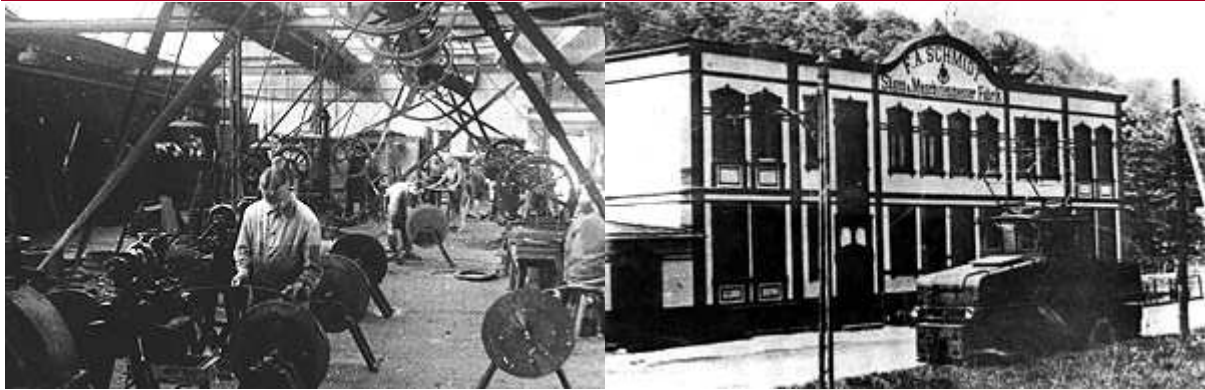
In 1908, the actual factory building was constructed by Gustav Schmidt, son of Carl Schmidt.



Tapioca – Sawblades

F.A.Schmidt GmbH & Co. KG

MACHINEKNIVES WORLDWIDE



In 1932, the son, Franz-Arnold Schmidt (4th Generation), entered into business. From now on, high-quality saws and machine knives have been exported all over the world.

Electricity has played an ever-increasing part in rising industrialization. So the factory-owned locomobile supplied electric power to the Morsbach district until an own transformer station was built.

Since 1966 Peter Schmidt leads the business in the 5th generation. Machinery was replaced and the offices and machine halls were adjusted to prepare the company for the worldwide challenge.



Tapioca – Sawblades

F.A.Schmidt GmbH & Co. KG

MACHINEKNIVES WORLDWIDE

Markus Feldhoff (son-in-law of Peter Schmidt) joined the company in 1999 and family tradition is secured that way.



Markus Feldhoff
Managing Director

Peter Schmidt
President

Over 150 years in family possession

Tapioca – Sawblades

F.A.Schmidt GmbH & Co. KG

MACHINEKNIVES WORLDWIDE

Why you should use sawblades out of the production F.A. SCHMIDT?

Our experience as traditional partner of the starch industry for more than 50 years guarantees highest quality and competence. Best possible lifetime, accompanied by optimum of gain of starch, which ends in an unbeatable price/output relation.

STEEL – HARDENING – TEETH – TOLERANCES – RESULT

• Rolled Steel

We use special steel rolled to our own specifications. As the material is rolled several times, we end up with a tolerance of the thickness of approx. **0,015mm**. Our saw blades are straight and can be fixed **absolutely perfect** in the cylinder to make sure that they can not move during rotation in order to avoid damage of the sieve-sheet.

• Hardening Process

Due to a **special hardening process**, we protect the surface of the saw blade and we achieve the best possible protection against rust. By a special heat-treatment we attain **tenacity of the teeth** and a symmetrical hardness, to avoid the danger of rupture caused by contaminants such as sand and stones entering into the process of rasping.

• Teeth

11, 15, 17, 19, or 22 teeth per inch, we produce at our customers' requests. The tooling is done by our specialists in our factory, which gives us maximum flexibility.

• Quality and Results

A permanent quality control process, effected with precision instruments and visual inspection, guarantees for our customers that even if the saw blades are stocked for the next season, that they can be sure of a **consistent level of quality**.

By close cooperation with our customers and the continuous development, we are sure that we found the optimal form of the teeth. No matter if pointed or slightly flat or ball-shaped, the angle and the depth of the teeth must be coordinated to have a maximum of output with a minimum of energy cost.

By the right use of anchor heart sawblades-a **3-5 % higher output of starch** is possible.

Tapioca – Sawblades

F.A.Schmidt GmbH & Co. KG

MACHINEKNIVES WORLDWIDE

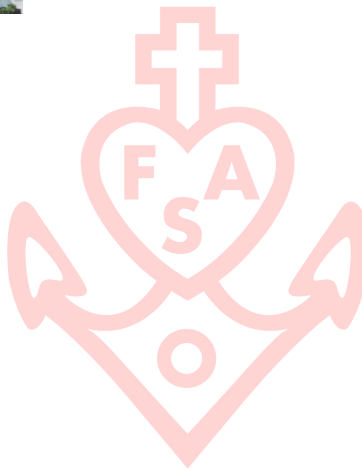
F.A.Schmidt GmbH & Co.KG
Morsbach 27
D-42857 Remscheid
Germany
Tel: +49 2191 71483
Fax: +49 2191 73778
Email: info@faschmidt.de
www.faschmidt.de



Tapioca – Sawblades

F.A.Schmidt GmbH & Co. KG

MACHINEKNIVES WORLDWIDE



Tapioca – Sawblades

www.faschmidt.de
D-42857 Remscheid, Morsbach 27

email: info@faschmidt.de
Tel.: +49 2191/71483
Fax: +49 2191/73717

