



**F.A. Schmidt GmbH & Co. KG**  
Remscheid manufacturer of machine knives and blades



ANCHOR HEART factory  
since 1845

**MADE IN GERMANY**



International registered trademark



MADE IN GERMANY



## OUR COMPANY HISTORY



*The company F.A. SCHMIDT has been located in 1845 in the city Remscheid, Germany, since its founding in 1845.*

*In 1845 Franz Arnold Schmidt established a business to produce steel tools, saws and knives in the hamlet of Morsbach.*

*His son Carl Schmidt took over the prospering enterprise and then handed it over to his son Gustav Schmidt who built the factory building in 1908 which is still standing today.*



*His son Franz Arnold Schmidt II directed the company until 1966 when he passed the business on to his son Peter Schmidt, thereby making the transition into the fifth generation.*

*Peter Schmidt still heads the company today. In 2000 his son-in-law, Markus Feldhoff, joined the executive board to carry on the family tradition and address the challenges of the digital age.*



ca.1920

*Our products are 100% Made in Germany. Optimised work processes and monitored quality inspections ensure the high performance of our products. F.A. SCHMIDT is strongly export-oriented and works closely with leading machine factories in Europe and Asia. We have gained a global reputation for top quality with our registered trademark ANCHOR HEART 'ANCHOR HEART'  Made in Germany.*

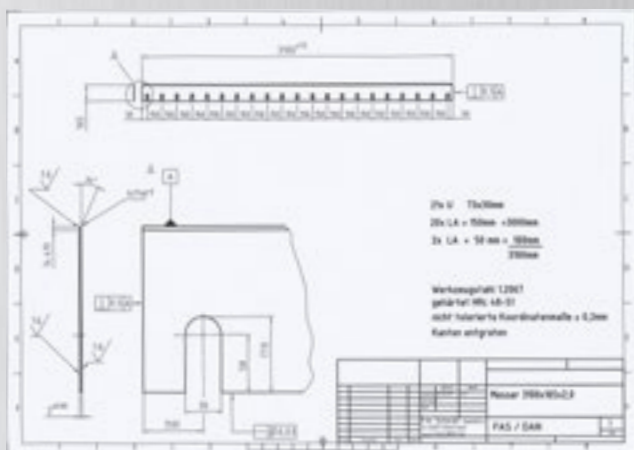


## DRUM KNIVES / SCRAPER BLADES



### Knives for drum dryers

- *Manufactured according to drawing or sample from hardened and polished German chrome steel or from corrosion-resistant stainless steel*
- *Burr-free and perfectly straight outer edge to ensure clean detachment or separation of product from the drum*
- *Consultation regarding use of coatings or other surface finishes, e.g. hard chrome plating*
- *24 hour sharpening service*







#### Standard dimensions

3020 x 165 x 2,0 mm
4020 x 165 x 2,0 mm
4010 x 110 x 2,0 mm
4500 x 165 x 2,0 mm
4030 x 165 x 3,0 mm
2650 x 155 x 3,5 mm
3015 x 155 x 3,5 mm
4015 x 155 x 3,5 mm
3030 x 180 x 3,5 mm
4520 x 165 x 3,5 mm



## RASPERBLADES for the starch industry



	600 mm	500 mm	400 mm	300 mm
20 x 1,00 mm	in stock	in stock	in stock	in stock
20 x 1,25 mm	in stock	in stock	in stock	in stock
21 x 1,25 mm	in stock	in stock	in stock	in stock
21 x 1,40 mm	in stock	in stock	in stock	in stock

MADE IN GERMANY



*Why should you use Anchor Heart rasper blades 'Made in Germany'?*

*Our 60 years of experience as partners to the starch industry guarantee competence and maximum quality. The best possible service life combined with an optimum starch yield produces an unbeatable price-to-performance ratio.*



**Steel – Hardening – Teeth – Tolerances – Result**

*We use special tool steel rolled for us according to our specifications.*

*As the steel is rolled multiple times, we end up with a thickness tolerance of approx. 0.015 mm. Through this, we ensure that our rasper blades are fixed perfectly straight and extremely securely in the drum and do not loosen during rotation and damage the sieve plate.*

*Using a special hardening process, we seal the surface of the rasper blade to provide the best possible corrosion resistance. In the next phase the rasper blade is subjected to subsequent thermal treatment in order to increase the toughness avoid the danger of breakage if stones or slag find their way into the rasping process.*

*Whether 11, 15, 17, 19 or 22 teeth per inch – we comply with our customers' wishes. Our in-house tooling capabilities grant us maximum flexibility.*

*After years of development work performed in cooperation with our customers, we have found the optimum tooth form for achieving maximum starch yield at a low energy consumption.*





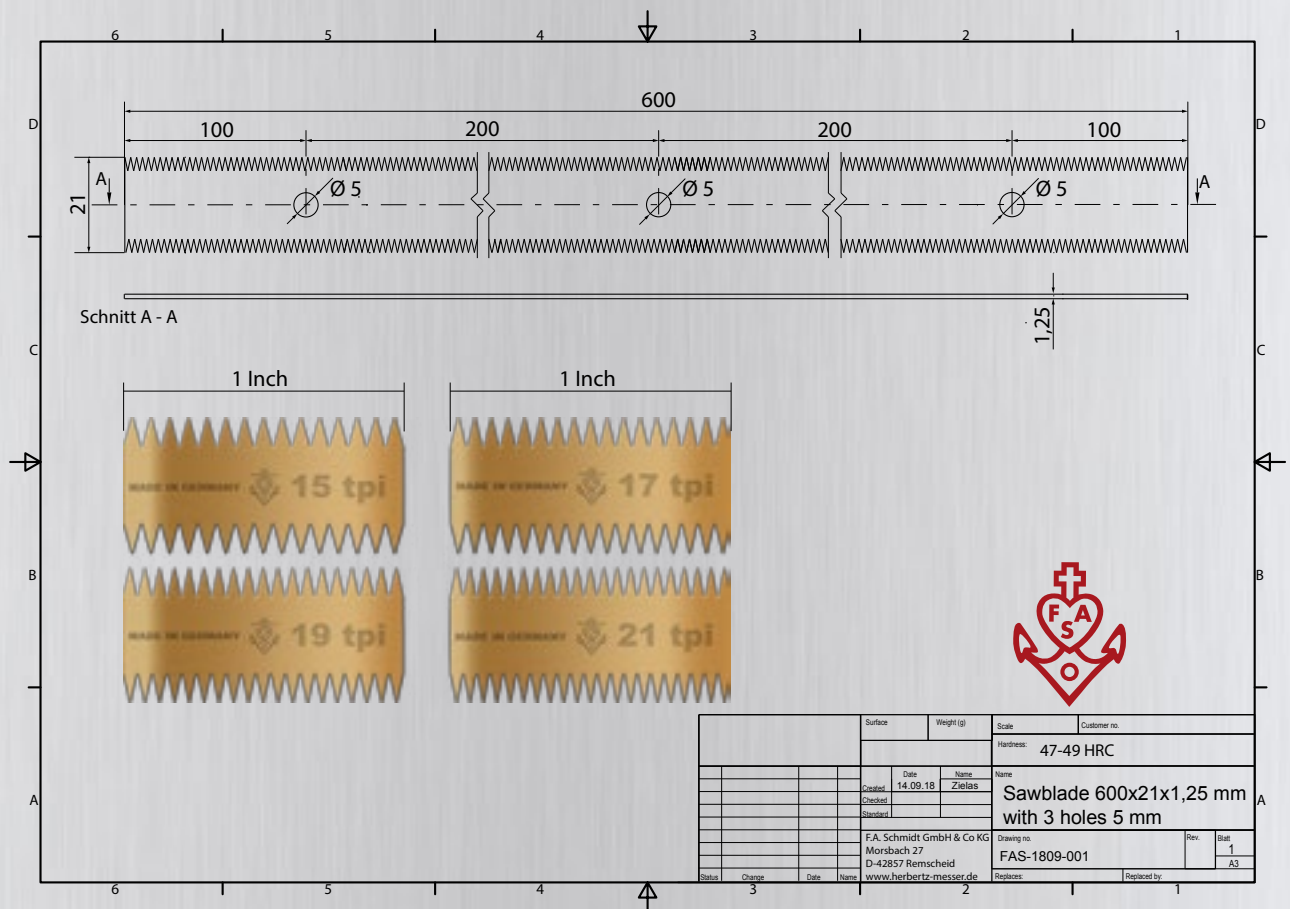
The quality and performance of our Anchor Heart rasper blades are worldwide known.

For that reason, we are original equipment manufacturers for nearly all rasper manufacturers.

Independent performance tests carried out by our customers have shown:

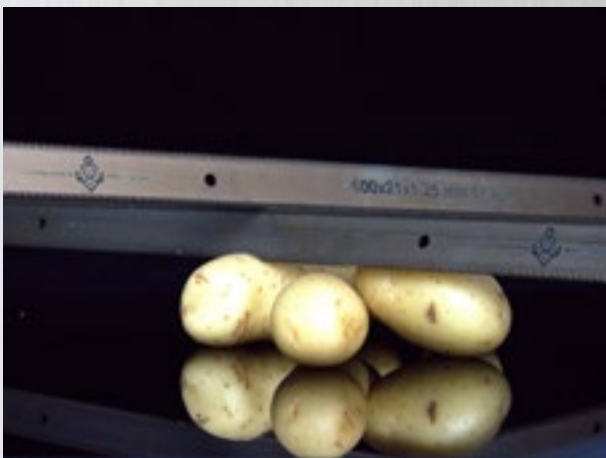
- Anchor Heart rasper blades have a longer service life.
- Anchor Heart rasper blades ensure maximum starch yield.
- Anchor Heart rasper blades meet the highest demands on quality.

Because of our material stock we are able, to deliver all dimensions in 2 to 4 weeks.



MADE IN GERMANY







## CLAMPING JAWS for rasper blades with holes

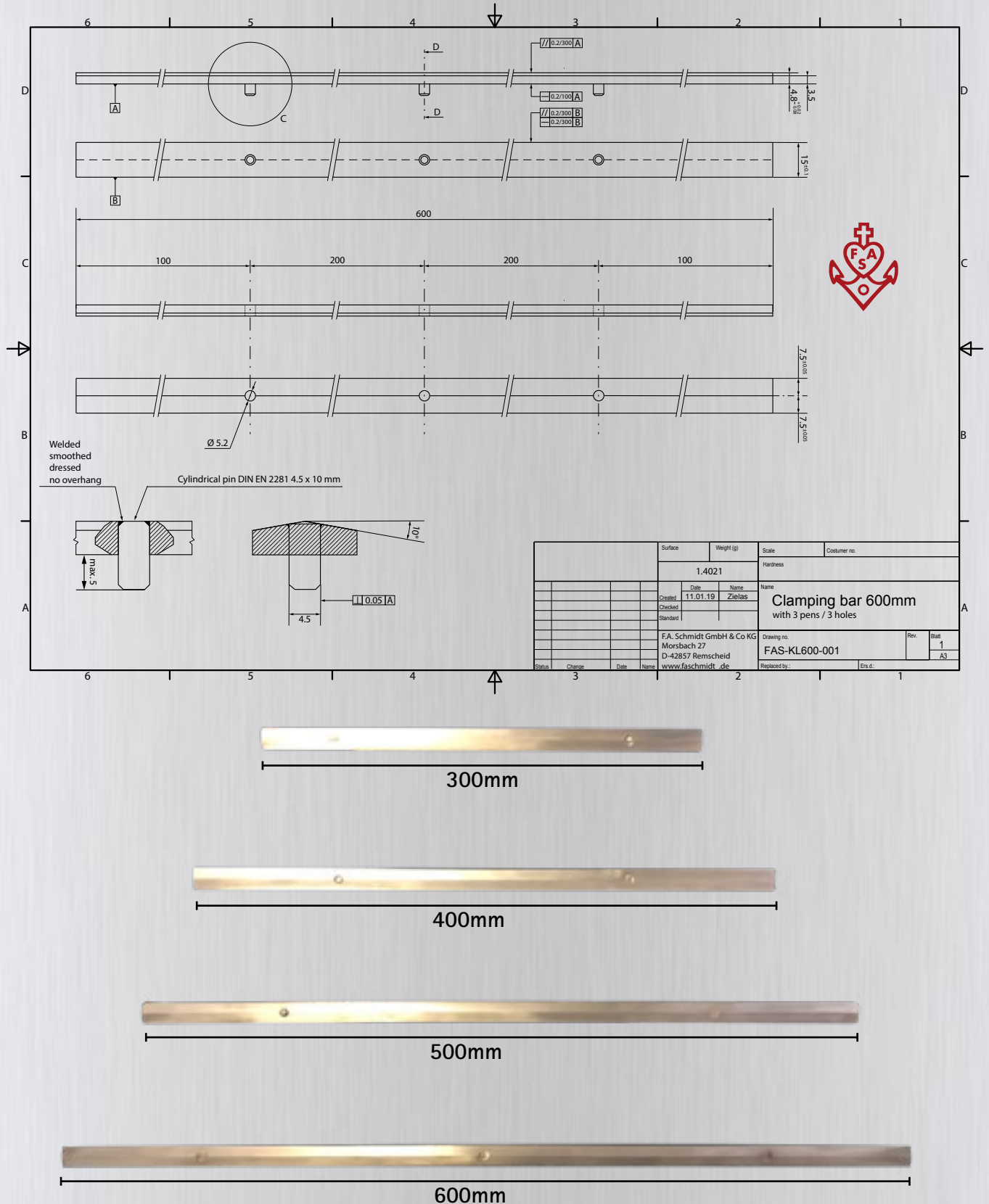
### NEW GENERATION

- *Maximum precision*
- *Optimised TIG welding process*
- *Rust-free*
- *High dimensional accuracy due to CNC fabrication*



Made of stainless section steel 15 x 3.5 mm with high strength in accordance with DIN / FAS 11333 / 2.2  
Suitable for rasper are made by: HOVEX - LARSSON - NIVOA - THAI GERMAN - STAMEX

MADE IN GERMANY





## CONTACT / How to find us

**F.A. Schmidt**

Morsbach 27

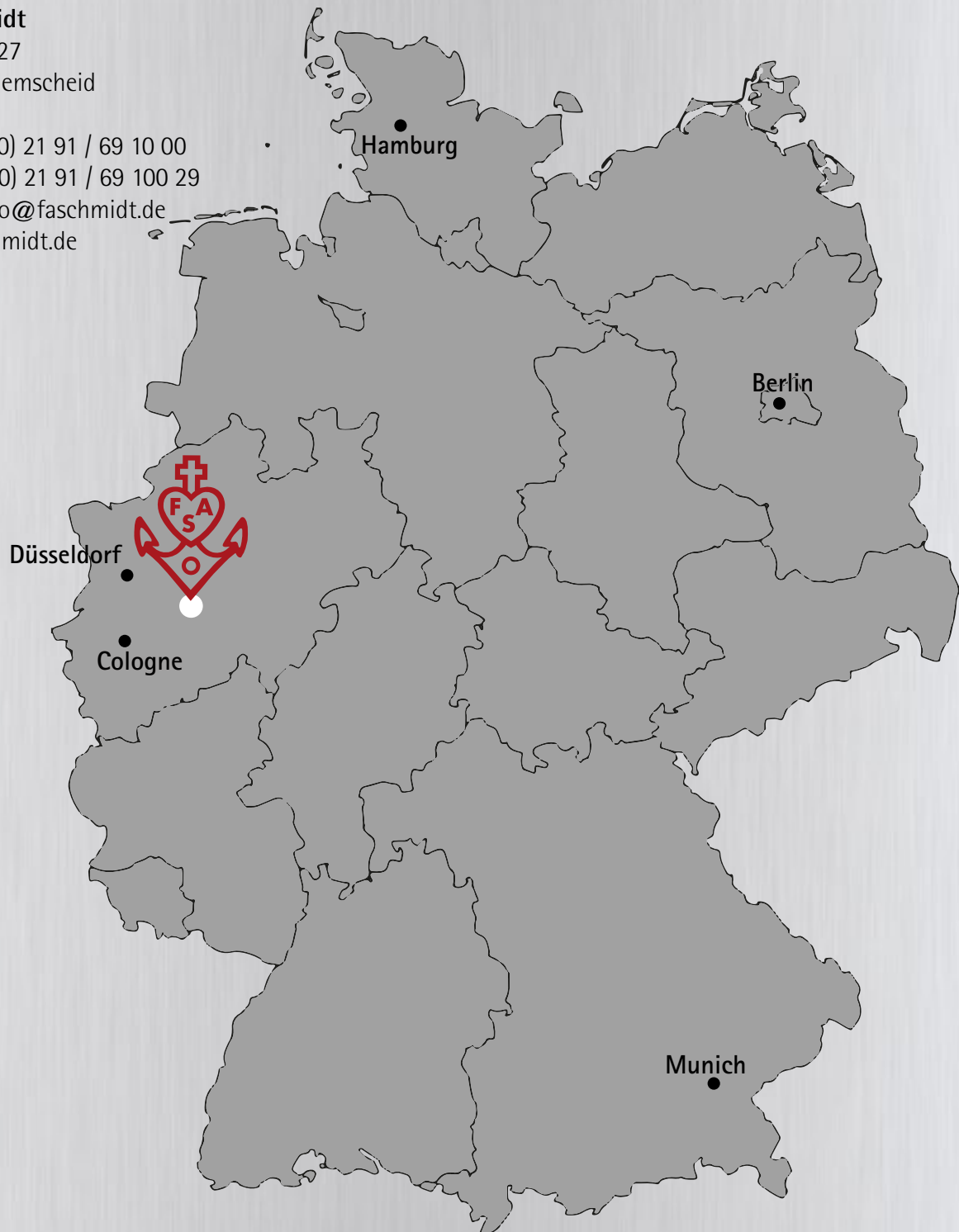
D-42857 Remscheid

Tel.: + 49 (0) 21 91 / 69 10 00

Fax: + 49 (0) 21 91 / 69 100 29

E-Mail: [info@faschmidt.de](mailto:info@faschmidt.de)

[www.faschmidt.de](http://www.faschmidt.de)



MADE IN GERMANY





Peter Schmidt



Markus Feldhoff





100% MADE IN GERMANY  
since 1845